

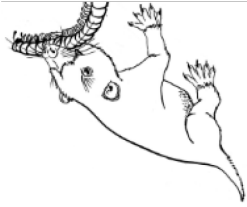


COLOUR THE CRETACEOUS

CAN YOU FIND THE ANIMALS?

GOBICONODON

Living in burrows and hiding from dinosaurs, this mammal would have lived on a diet of insects.



BARYONYX

This fish-eating predator was famous for its crocodile-like head and giant claw.



POLACANTHUS

The heavy armour covering this dinosaur would have protected it from attack.



NEOVENATOR

At 8m long this was one of the top predators in the UK during the Cretaceous.



THE BRISTOL DINOSAUR PROJECT



During the Cretaceous period, about 120 million years ago, the UK was warmer than today. Many of the best fossils from this time come from the Isle of Wight.

@bristoldino



@bristoldino1



Artwork by James Ormiston

EOTYRANNUS

Even though it was small in size, this dinosaur was a relative of the famous giant *T. rex*.



ISTIODACTYLUS

With a 5m wingspan, this pterosaur was far bigger than any flying animal alive together.

